

MONTHLY MEMBERSHIP PROGRESS REPORT

LOCATION AUSTRALIA

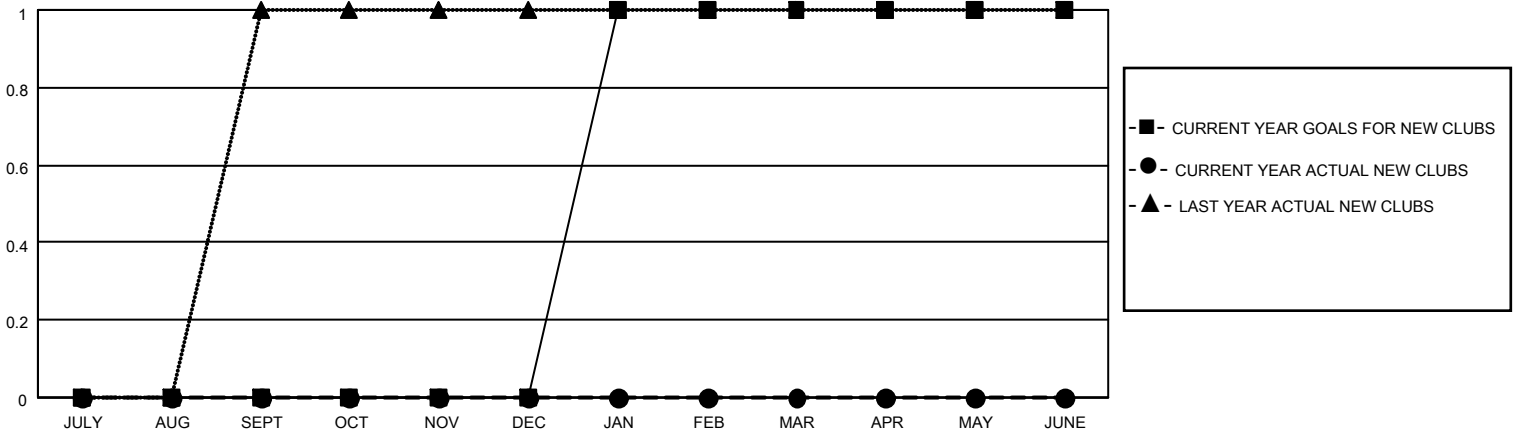
District 201V14

Results as of: 4/30/2021

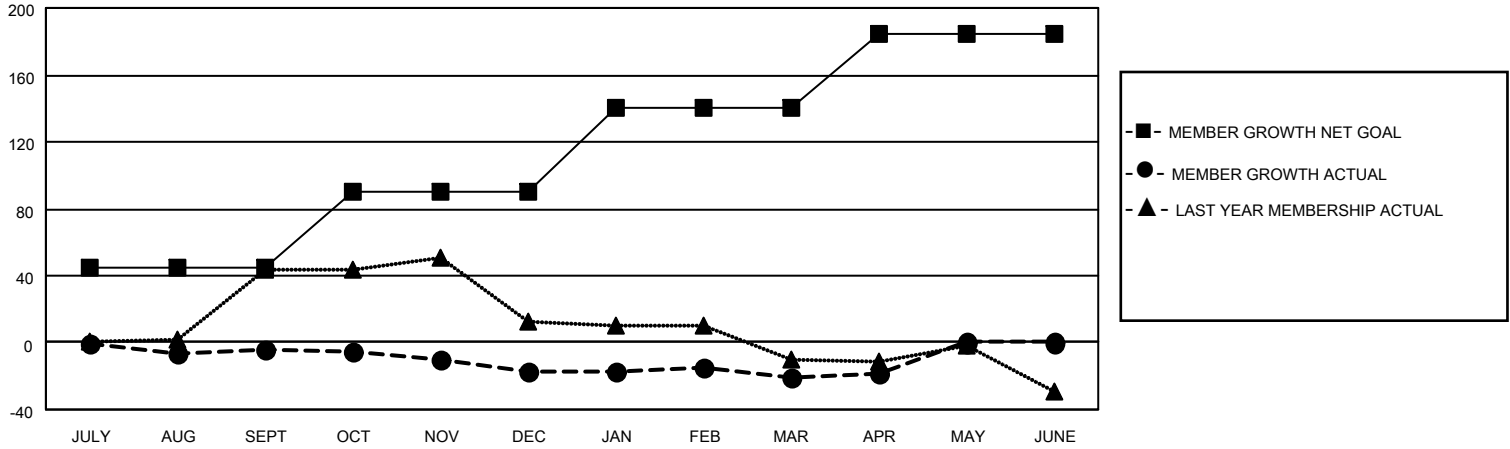
Clubs			
RESULTS FOR 2020-2021			
QUARTER	NEW CLUB GOAL	NEW CLUBS	DROPPED CLUBS
JULY/AUG/SEPT	0	0	1
OCT/NOV/DEC	0	0	0
JAN/FEB/MAR	1	0	0
APR/MAY/JUNE	0	0	0

Members			
RESULTS FOR 2020-2021			
QUARTER	MEMBER GROWTH NET GOAL	MEMBER GROWTH ACTUAL	DROPPED MEMBERS ACTUAL (including transfers)
JULY/AUG/SEPT	45	19	19
OCT/NOV/DEC	45	16	26
JAN/FEB/MAR	50	28	27
APR/MAY/JUNE	45	18	13

GOALS AND ACTUAL NEW CLUBS CUMULATIVE



GOALS AND ACTUAL MEMBERS CUMULATIVE



DROPPED CLUBS: 1

35 CLUBS OF 74 ADDED 1 OR MORE NEW MEMBERS

GENDER DISTRIBUTION

MALE 876 (69.09%)
FEMALE 392 (30.91%)

DROPPED MEMBERS

DECEASED	13
CLUB CANCELLED	0
OTHER	72
TOTAL	85

[CLICK HERE FOR CUMULATIVE MEMBERSHIP DATA](#)

TOTAL FAMILY UNIT MEMBERS	142
FAMILY MEMBERS PAYING HALF DUES	72